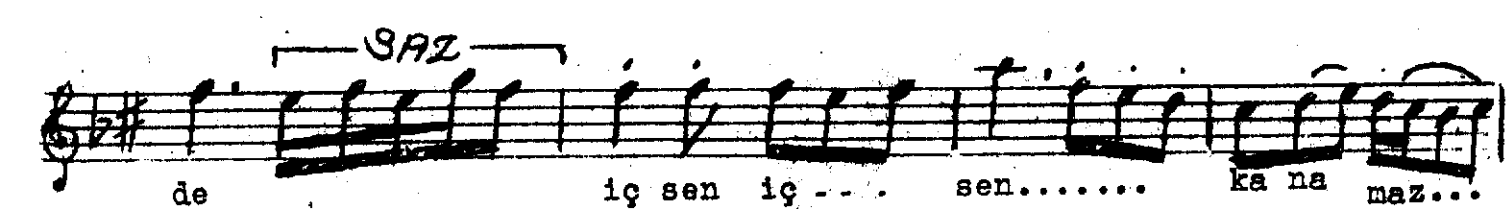
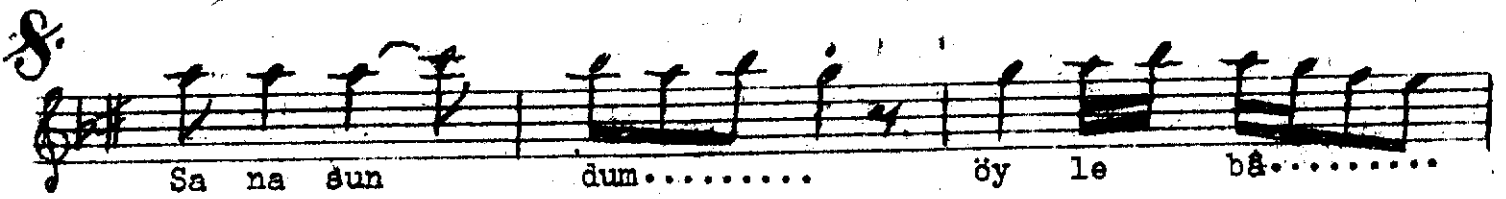
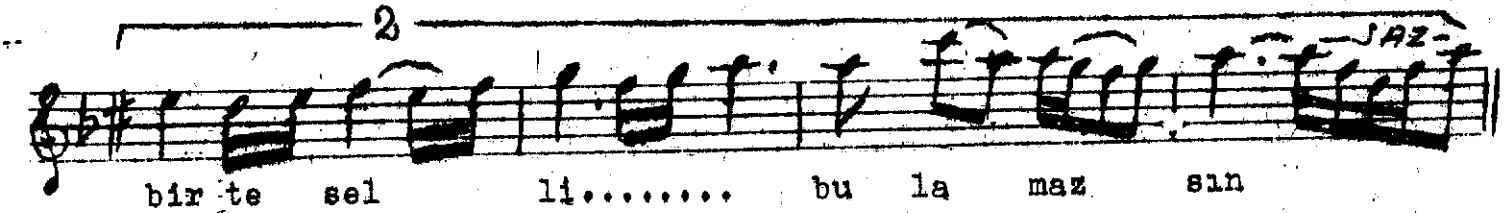
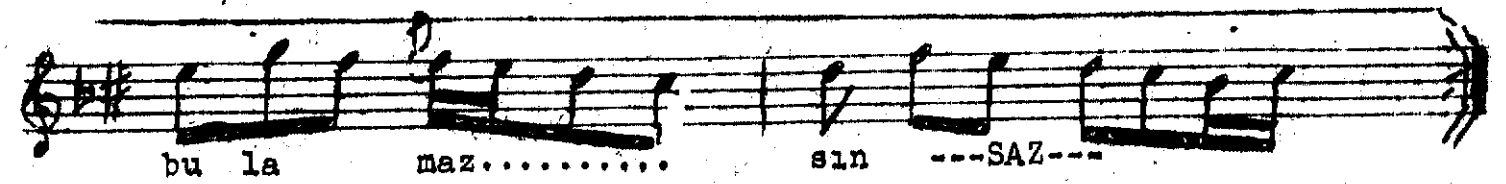
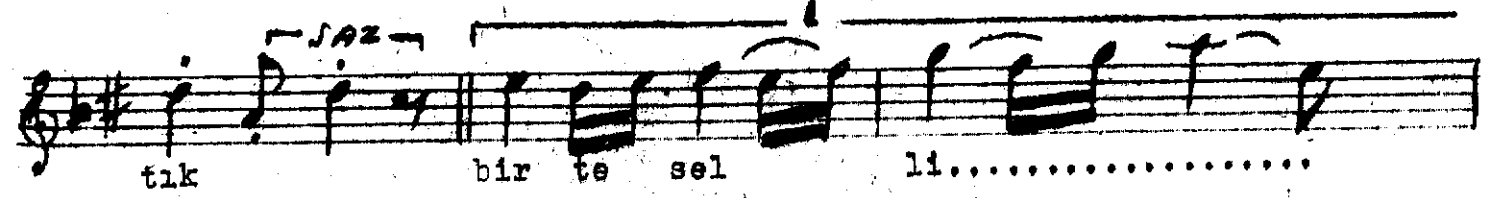
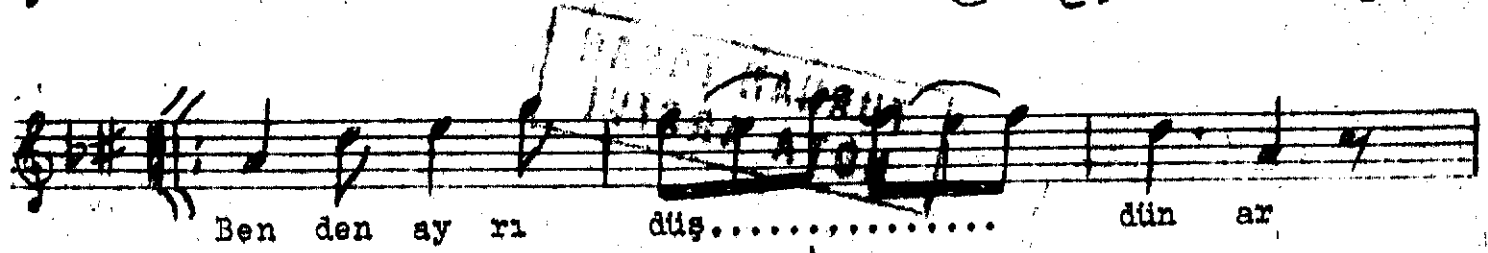
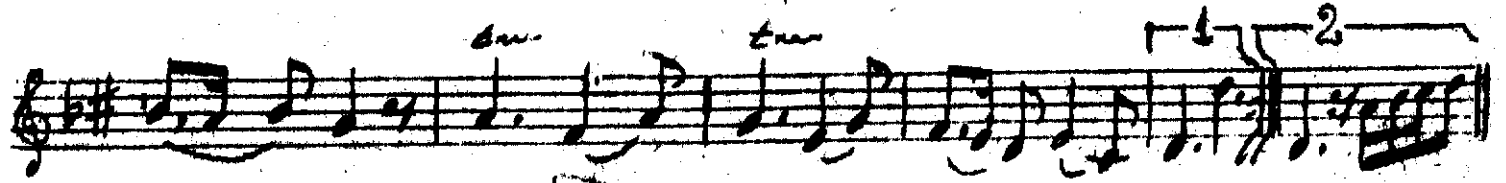
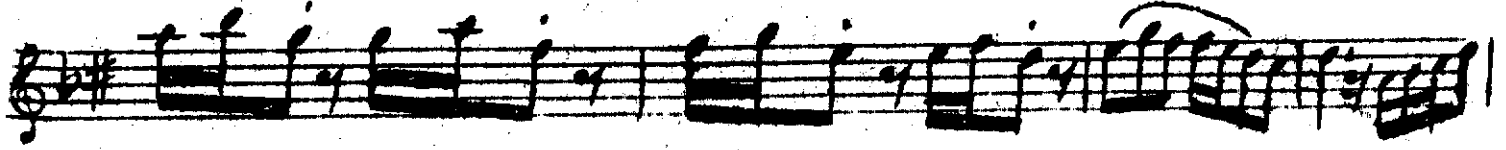
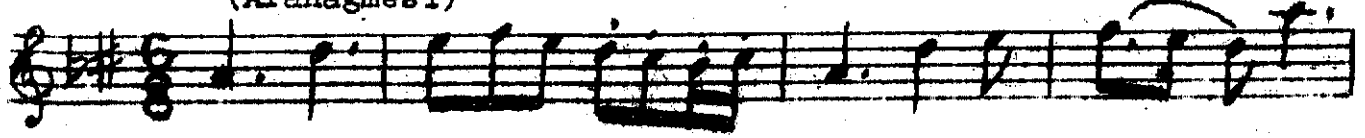


SULTANİYEĞÂH ŞARKI

Beste: M.Nureddin Selçuk

Yürük Semâî (Aranağmesi)

Güfte: Nezahat Kunta



de..... iç sen iç..... sen..... kana maz. *

Meyana *Karar*

sin - SAZ - 3112

(Meyan)

Ne bu sey..... le ne vus lat

la..... sen va aş ka.....

do ya maz..... sin ne bu sey.....

le ne vus lat..... la

Sen bu aş..... ka..... do ya maz... sin

Benden ayrı düştün artık bir teselli bulamazsın
 Sana sundum öyle bade içsen içsen kanamazsın
 Ne buseyle ne vuslatla sen bu aşka doyamazsın
 Sana sundum öyle bade içsen içsen kanamazsın.